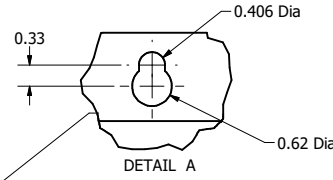
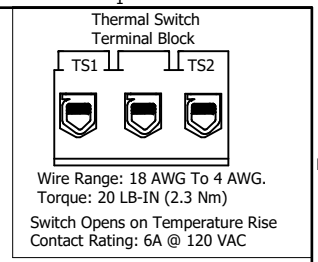
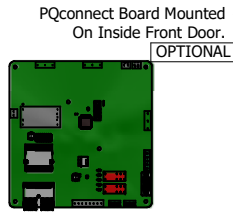
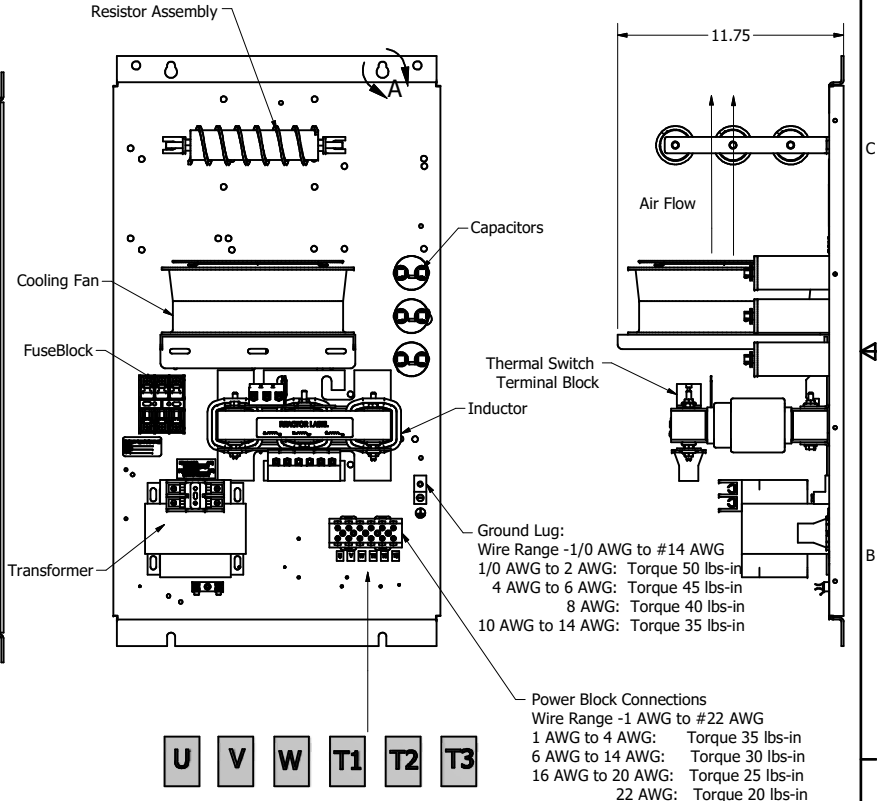
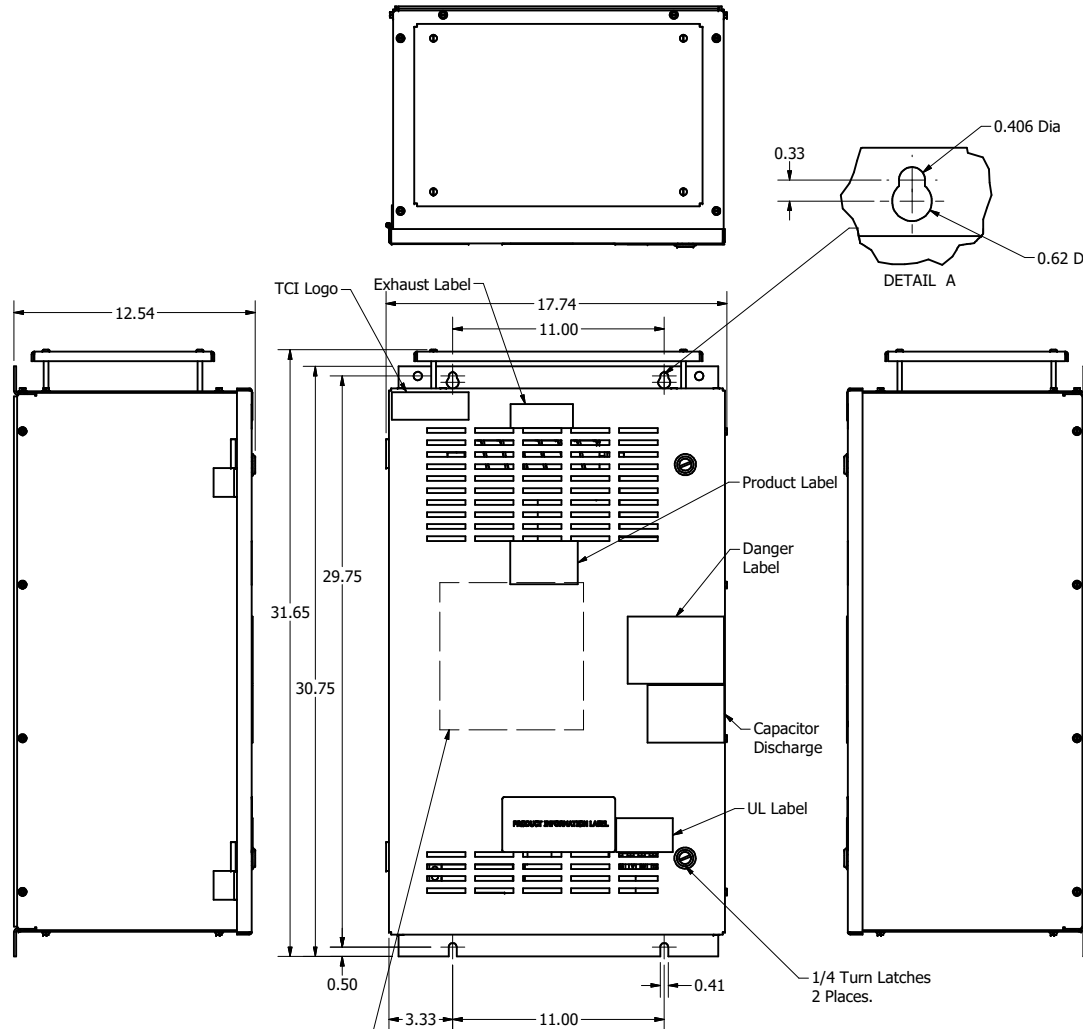


SineWave Part Number	Schematic Drawing#	Approx Weight (LBS)
KMG25C01A	24281-11A	138
KMG25C01P	24281-11P	139

HorsePower (HP)	kVar	Max Amps	Voltage (V)	HZ	Phase
20	2.17	25	600	60	3



D
C
B
A



U V W T1 T2 T3

Customer Is Responsible For Installation to Meet All National And Local Electrical Codes.

Material(s) Shall be RoHS Compliant

TCI, LLC CLAIMS PROPRIETARY RIGHTS IN THE MATERIAL HEREIN DISCLOSED. IT IS SUPPLIED WITHOUT PREJUDICE TO ANY PATENT RIGHTS OF TCI AND MAY NOT BE REPRODUCED OR USED TO MANUFACTURE ANYTHING SHOWN THEREIN WITHOUT WRITTEN PERMISSION FROM TCI.					TOLERANCES (EXCEPT AS NOTED)	W132 N10611 Grant Drive Germantown, WI 53022 KMG25C01 - SineWave Filter Enclosed Type 1, 20HP, 600V DWN BY: DSW DATE: 10/07/2016 104438DG SCALE: 1/8 DRAWN: JSE SHEET 1 OF 1
					DECIMAL	
					.XX ± .25 .XXX ± .10	
					FRACTIONAL	
	B Add PQ Board	9/22/2020	DSW		ANGULAR ± 1/16	
	NO REVISION				± 1°	